



JUST PRO TOOLS

Australia's leading online retailer of toolboxes, garage storage systems & tool organisers



1



11 or 12 PIECE GARAGE STORAGE SYSTEM

Available with German Beechwood Timber or Stainless Steel Top & Optional Mounting Kit

Package includes:

- 4-Leg Workbench when wall mounted; or 6-Leg Workbench
- 2-Door Roll Cabinet
- 2 x Standard Upright Extensions
- 4-Drawer Roll Cabinet
- 2 x Standard Upright Cabinets
- Peg Board & Peg Kit
- 3 x 1-Door Wall Cabinets

With Mounting Kit, there's no need to find studs. No measuring. No drilling. Simply attach the Mounting Kit to the Workbench

OVERALL DIMENSIONS 2300mm (H) x 3670mm (W) x 630mm (D)

2



6 PIECE MID SIZE GARAGE STORAGE

Available with Timber or Stainless Top

Package includes:

- 2 x 1-Door Wall Cabinets
- Standard Upright Cabinet
- Standard Upright Extension
- Peg Board & Peg Kit
- 4-Drawer or 8-Drawer Roll Cabinet

OVERALL DIMENSIONS
2300mm (H) x 2140mm (W) x 630mm (D)

3



42" TOP CHEST ROLL CABINET

Available in Black, Blue, Red, Green & Orange

Features the SNAP LOCK ball bearing slides.

DIMENSIONS 1520mm (H) x 1065mm (Plus 65mm Handles) x 460mm (D)
Draw slides Weight Bearing Capacity 45kgs

4



72" WORKBENCH

German Beechwood Timber

975mm (H) x 1830mm (W) x 630mm (D)

With 4 Legs or 6 Legs

5

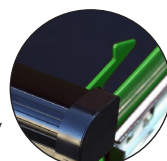


72" TOP CHEST & ROLL CABINET

- Features the LIFT UP HANDLE DRAWER RETENTION SYSTEM
- Smooth sliding ball bearing slides
- High quality foam liners
- Black handles are on the Orange & Green range only

Available in Black, Blue, Red, Green & Orange

DIMENSIONS
1545mm (H) x 1830mm (W) x 609mm (D)



Visit us online at www.justprotools.com.au

We accept Visa & Mastercard. We also accept cash & eftpos for Sydney pick ups.

All products subject to availability, see website for pricing. All prices include GST. *Prices and freight subject to change without notice.

This publication is copyright 2025 © Just Pro Tools.

80" TOOLBOXES

NEW UPGRADED DESIGN
STEEL CONSTRUCTION
INDUSTRIAL QUALITY



Available in Black,
Blue, Red, Green
& Orange



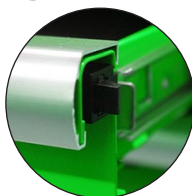
Unit
Weights
500kg

80" TOP CHEST, ROLL CABINET & SIDE LOCKER

Features the Under Handle Latch Retention
that keeps all drawers closed while the toolbox
is unlocked.

- 6 38 Drawer Configuration
(IMAGE ABOVE - 17 Drawer Roll Cabinet, Top Chest
& Side Locker)

- 7 43 Drawer Configuration
(IMAGE BELOW - 22 Drawer Roll Cabinet, Top Chest
& Side Locker)



Available in Black,
Blue, Red, Green
& Orange



80" TOP CHEST, ROLL CABINET & SIDE LOCKER

DIMENSIONS
1665mm (H) x 2020mm (Plus 95mm Handles) (W) x 603mm (D)

Available in Black, Blue,
Red, Green & Orange



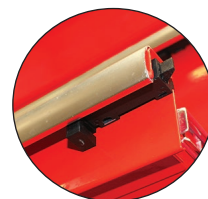
Unit
Weights
330kg

Double
Ball
Bearing
Drawer
Slides

- Drawers are easily removed and refitted
- Twin steel wall outer shell
- Castors are load rated at 900kgs
- Ball bearing drawer slides
- Includes round key barrel locks
- Features the Under Handle Latch Retention that keeps all drawers closed while the toolbox is unlocked.

80" WORKSTATION 60" ROLL CABINET & LOCKER WITH STAINLESS STEEL TOP

- 8 23 Drawer Configuration
(17 Drawer Roll Cabinet & Side Locker)
- 9 28 Drawer Configuration
(IMAGE ABOVE - 22 Drawer Roll Cabinet &
Side Locker)



DIMENSIONS
1665mm (H) x 2020mm (Plus 95mm Handles) (W) x 603mm (D)

80" WORKSTATION 23 Drawers Roll Cabinet & Locker

Available in Black, Blue, Red,
Green & Orange



Double
Ball
Bearing
Drawer
Slides

- 10 23 Drawer Configuration
(IMAGE ABOVE - 17 Drawer Roll Cabinet and Side Locker)
- 11 28 Drawer Configuration
(22 Drawer Roll Cabinet and Side Locker)

DIMENSIONS 1665mm (H) x 2020mm (Plus 95mm Handles) (W) x 603mm (D)

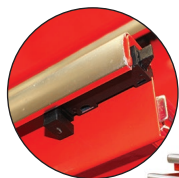
60" TOOLBOXES

NEW UPGRADED DESIGN
STEEL CONSTRUCTION
INDUSTRIAL QUALITY



60" TOP CHEST & ROLL CABINET

Unit Weighs 402kg



- Features the Under Handle Latch Retention that keeps all drawers closed while the toolbox is unlocked.



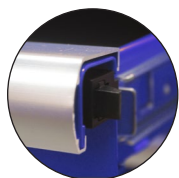
Double Ball Bearing Drawer Slides

Available in Black, Blue, Red, Green & Orange

12 32 Drawer Configuration
(17 Drawer Roll Cabinet & 15 Drawer Top Chest)
DIMENSIONS 1670mm (H) x 1530mm (W) x 603mm (D)

60" TOP CHEST & ROLL CABINET

Unit Weighs 417kg



- Features the Under Handle Latch Retention that keeps all drawers closed while the toolbox is unlocked.
- Draw slides weight bearing capacity 45kgs



Double Ball Bearing Drawer Slides

Available in Black, Blue, Red, Green & Orange

13 37 Drawer Configuration
(22 Drawer Roll Cabinet and 15 Drawer Top Chest)
DIMENSIONS 1670mm (H) x 1530mm (W) x 603mm (D)

STAINLESS BENCHTOP 40mm high

- 14** TO SUIT 60"
1530mm (W) x 603mm (D)
- 15** TO SUIT 42"
1060mm (W) x 450mm (D)



- Round key barrel locks
- Drawers are easily removed and refitted
- Features the new LATCH LOCK system
- Lined with pre-cut quality foam liners
- Draw slides weight bearing capacity 45kgs
- Weight 148kg



TOP CHEST 15 Drawers

DIMENSIONS 595mm (H) x 1500mm (W) x 588mm (D)

60" ROLL CABINET

Available in Black, Blue, Red, Green & Orange

17 17 Drawer Roll Cabinet (IMAGE SHOWN)

18 22 Drawer Roll Cabinet

Weight 235kg
DIMENSIONS 1070mm (H) x 1530mm (W) x 603mm (D)
665kg Weight Capacity



60" ROLL CABINET & STAINLESS TOP

Available in Black, Blue, Red, Green & Orange

19 17 Drawer Roll Cabinet

20 22 Drawer Roll Cabinet (IMAGE SHOWN)

DIMENSIONS 1070mm (H) x 1530mm (W) x 603mm (D)
665kg Weight Capacity | Weight 235kg



60" SIDE LOCKER

6 Drawers

- Hooks over the Roll Cabinet in 3 spots
- Attaches to either side of a Roll Cabinet
- Includes 2 x Height Adjustable Shelves
- Weight 89kg

Available in Black, Blue, Red, Green & Orange

DIMENSIONS 1485mm (H) x 490mm (W) x 600mm (D)



72" TOOLBOXES

DUE TO THE SIZE AND WEIGHT OF THESE TOOLBOXES, THEY REQUIRE A FORKLIFT AT THE DELIVERY ADDRESS



22

Available in
Black, Blue,
Red, Green
& Orange



72" TOP CHEST 12 Drawers

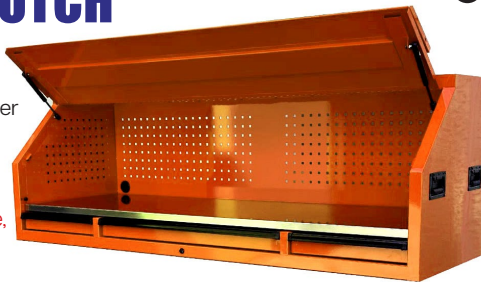
Features the Lift Up Handle Drawer Retention System
DIMENSIONS CLOSED 540mm (H) x 1820mm (W) x 596mm (D)

72" TOP HUTCH 3 Drawers

- Features the Lift Up Handle Drawer Retention System
- Ball bearing slides
- Quality foam liners

Available in Black, Blue,
Red, Green & Orange

DIMENSIONS
540mm (H) x 1370mm (W) x 596mm (D)



23

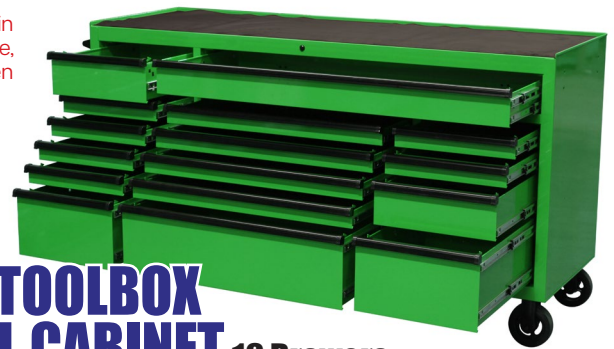


25

72" TOOLBOX ROLL CABINET 16 Drawers - with Stainless Steel Top

Features the Lift Up Handle Drawer Retention System
DIMENSIONS 1015mm (H) x 1830mm (W +105mm handle) x 609mm (D)

Available in
Black, Blue,
Red, Green
& Orange

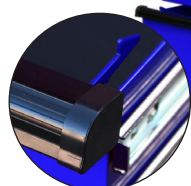


26

72" TOOLBOX ROLL CABINET 16 Drawers

72" TOP CHEST & ROLL CABINET 28 Drawers

- Features the Lift Up Handle Drawer Retention System
- Ball bearing slides
- Quality foam liners
- Smooth sliding drawer slides in all drawers



Available in Black, Blue, Red, Green & Orange

Drawer slides weight bearing capacity 45kgs
Features the Lift Up Handle Drawer Retention System
DIMENSIONS 1545mm (H) x 1830mm (Plus 115mm handle) (W) x 609mm (D)



24

27



Available in
Black, Blue, Red,
Green & Orange

SIDE CABINET 7 Drawers

- Features the Lift Up Handle Drawer Retention System
- Smooth sliding drawer slides in all drawers
- Fits both the 54" & 72" roll cabinet

DIMENSIONS 1005mm (Plus 180mm Wheels) (H) x 560mm (W) x 608mm (D)

54" TOOLBOXES

DUE TO THE SIZE AND WEIGHT OF THESE TOOLBOXES, THEY REQUIRE A FORKLIFT AT THE DELIVERY ADDRESS



28



54" TOP CHEST, ROLL CABINET & SIDE LOCKER

23 Drawers

Available in Black, Blue, Red, Green & Orange

Features the Lift Up Handle Drawer Retention System
DIMENSIONS 1545mm (H) x 1940mm (W + 105mm handle) x 609mm (D)

29

54" TOP CHEST & ROLL CABINET

18 Drawers



Features the Lift Up Handle Drawer Retention System

Double Ball Bearing Drawer Slides

DIMENSIONS 1545mm (H) x 1380mm (W + 105mm handle) x 609mm (D)

STAINLESS STEEL BENCHTOP

40mm high

- 30 TO SUIT 54"
1380mm (W) x 609mm (D)
- 31 TO SUIT 72"
1830mm (W) x 609mm (D)



32



MID HEIGHT LOCKER

5 Drawers

Available in Black, Blue, Red, Green & Orange

- Features the Lift Up Handle Drawer Retention System
- 1 x Height adjustable shelf
- Full door height locking mechanism
- Fits both the 54" & 72" roll cabinet

DIMENSIONS 1365mm (Plus 180mm Wheels) (H) x 560mm (W) x 608mm (D)
Weight 93kgs

54" WORKSTATION

33

15 Drawers with Stainless Steel Top

- Features the Lift Up Handle Drawer Retention System
- Smooth sliding drawer slides
- Industrial quality castors
- Quality foam liners in every drawer

Available in Black, Blue, Red, Green & Orange

DIMENSIONS 1545mm (H) x 1940mm (W + 105mm handle) x 609mm (D)



34



TOP CHEST 8 Drawers

Available in Black, Blue, Red, Green & Orange

540mm (H) x 1370mm (W + 130mm handles) x 596mm (D)

35



ROLL CABINET 10 Drawers

Available in Black, Blue, Red, Green & Orange

1000mm (H) x 1380mm (W + 105mm handle) x 609mm (D)

42" TOOLBOXES

PERFECT AS YOUR FIRST TOOLBOX OR
FOR APPRENTICES JUST STARTING OUT



Available in
Black, Blue,
Red, Green
& Orange

Double
Ball
Bearing
Drawer
Slides

19 DRAWER COMBO Top Chest & Roll Cabinet

DIMENSIONS 1515mm (H) x 1065mm
(Plus 65mm Handles Each Side) (W) x 460mm (D)



42" ROLL CABINET 13 Drawers or 15 Drawers



DIMENSIONS
975mm (H) x 1065mm (Plus 65mm
Handles Each Side) (W) x 460mm (D)



The 13 & 15
drawer roll
cabinet
configurations
are only available
in black.

23 or 25 DRAWER COMBO

1515mm (H) x 1065mm (W) x 460mm (D)



TOP CHEST 8 Drawers

Available in Black, Blue, Red, Green & Orange



TOP CHEST 10 Drawers

DIMENSIONS 545mm (H) x 1040mm
(Plus 65mm Handles Each Side) (W) x 450mm (D)



42" ROLL CABINET 11 Drawers

Available in Black, Blue, Red, Green & Orange
975mm (H) x 1065mm (W) x 460mm (D)
350kg Weight Capacity



Available in
Black, Blue,
Red, Green
& Orange

HUGE 76" COMBO

- 8 Drawer Top Chest
- 11 Drawer Roll Cabinet
- 7 Drawer Side Cabinet
- Full Height Locker
- Combo Weighs 284kg
- Ball bearing slides
- Double Drawer Slides on the larger Drawers

DIMENSIONS
1515mm (H) x 1954mm (W) x 460mm (D)



SIDE CABINET 7 Drawers

- Features a full length
hook on both sides that
hook over the tip of the
majority of toolboxes.
- Wheels not required.

Available in Black, Blue,
Red, Green & Orange

DIMENSIONS 845mm (H) x 425mm (W) x 460mm (D)

3 TIER TROLLEY

- 150kg Weight
capacity
- Trade quality
- Steel construction
- Assembly required

Available in
Black, Blue
& Red



DIMENSIONS 780mm (Plus 18mm Handle) (H) x
380mm (W) x 725mm (Plus 85mm Handle) (D)

27" SERIES & SERVICE CARTS



45

Available in Black, Blue & Red



Double Ball Bearing Drawer Slides

Features full-depth drawers and smooth sliding drawer slides.

19 DRAWER COMBO Top Chest & Roll Cabinet

DIMENSIONS 1475mm (H) x 680mm (W) x 460mm (D)
Weight 119kgs

46



3 Drawers INTERMEDIATE BOX

Available in Black, Blue & Red
320mm (H) x 672mm (W) x 456mm (D)

47



Double Ball Bearing Drawer Slides

Available in Red, Blue, Black, Green & Orange

ROLL CABINET 7 Drawers

990mm (H) x 680mm (W) x 460mm (D)
285kg Weight Capacity | Weight 67kgs

48

BENCH SERVICE CART

Available in Black, Blue, Red Green & Orange



DIMENSIONS CLOSED
997mm (H) x 750mm (W) x 525mm (D)
Weight 56kg

49

TOP CHEST 12 Drawers

Available in Black, Blue & Red
485mm (H) x 660mm (W) x 445mm (D)
Weight 52kgs
Internal Drawer measurements:
405mm (front to back)



50

SCREW DRIVER BOX

Available in Black, Blue & Red
• 28 holes of various sizes for different sized screwdrivers.

DIMENSIONS 280mm (H) x 460mm (W) x 95mm (D)
Weight 5kgs



51

Available in Black, Blue, Red & Green



7 DRAWER MECHANIC SERVICE CART

DIMENSIONS 950mm (1570mm when opened) x 780mm (Plus 105mm Handles) (W) x 570mm (D)
Weight 106kgs

SERVICE CART 5 DRAWER

Available in Black, Blue, Red, Green & Orange



52

Weight 70kgs
DIMENSIONS CLOSED
1050mm (H) x 777mm (W) x 520mm (D)

AEROSOL CAN HOLDER

• Drops easily into place
• No installation required



Available in Black Blue, Red & Green
160mm (H) x 408mm (W) x 90mm (D)

54

SIDE SHELF

Suits our range of 27" and 42" Toolboxes



Available in Black, Blue, Red, Orange & Green
DIMENSIONS 15mm (H) x 545mm (W) x 575mm (D)
Weight 4.3kgs

GARAGE STORAGE

STEEL CONSTRUCTION
POWDER COAT SEMI GLOSS FINISH
SECURE AND KEY LOCKABLE



UPRIGHT CABINET EXTENSION



- 55 **Standard Size - Short**
472mm (H) x 920mm (W) x 460mm (D)
- 56 **Standard Size**
590mm (H) x 920mm (W) x 460mm (D)
- 57 **Super Size**
490mm (H) x 1220mm (W) x 460mm (D)

*Short cupboard required for uprights with wheels.



2 x Height Adjustable Shelves

2 DOOR WALL CABINET

710mm (H) x 710mm (W) x 300mm (D)

Reinforced Shelves
Stainless Steel Doors
1 x Height Adjustable Shelf



1 DOOR WALL CABINET

710mm (H) x 610mm (W) x 300mm (D)

STANDARD UPRIGHT CABINET

ALL CABINETS FEATURE

- Reinforced Shelves
- Stainless Steel Doors
- Full Door Height Rod Locking Mechanism



- 60 ON FEET (1740mm x 920mm x 460mm)
- 61 ON WHEELS (1830mm x 920mm x 460mm)

MOUNTING FRAME KIT

Attaches to the 6 Leg Workbench

- Easily attach 3 x Wall Cabinets (see Top Right) and Peg Board (see below) without the need for measuring and drilling into walls.
- With Mounting Kit, there's no need to find studs. No measuring. No drilling. Simply attach the Mounting Kit to the Workbench.



62



68

11 or 12 PIECE GARAGE STORAGE SYSTEM

Workbench: Timber or Stainless Top

Our Garage Storage products are flat packed and come with clear and detailed instructions. All tools required for assembly are included.

Package includes:

- 4-Leg Workbench when wall mounted or 6-Leg Workbench
- 2 x Standard Upright Cabinets
- 2 x Standard Upright Cabinet Extensions
- 2-Door Roll Cabinet
- 4-Drawer Roll Cabinet
- 3 x 1-Door Wall Cabinets
- Peg Board (includes 46 piece Peg Kit)
- OPTIONAL: Mounting Frame Kit

2300mm (H) x 3670mm (W) x 630mm (D)



72" WORKBENCH

your choice of timber top or stainless steel top

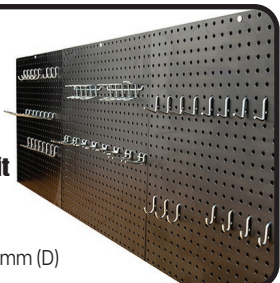
975mm (H) x 1830mm (W) x 630mm (D)
Load rated at 450kg

63

PEG BOARD

Includes 46 piece Peg Kit
Also available in Grey

610mm (H) x 1830mm (W) x 15mm (D)



4 DRAWER ROLL CABINET

65

890mm (H) x 750mm (W) x 585mm (D)



2 DOOR ROLL CABINET

66

890mm (H) x 750mm (W) x 585mm (D)

GARAGE STORAGE

PERFECT FOR THE HOME OFFICE,
GARAGE, SHED, WORK
STOREROOM & LAUNDRY



Combo includes:

- Heavy Duty Workbench - Timber or Stainless Top
- Standard Upright Cabinet
- 2-Door Roll Cabinet
- 4-Drawer Roll Cabinet

This package can
be upgraded to
the Super Size
Upright Cabinet



4 PIECE GARAGE STORAGE SYSTEM

OVERALL DIMENSIONS 1740mm (H) x 2740mm (W) x 630mm (D)

Combo includes:

- 48" Drawer 4 Drawer Top Roll Cabinet (Available in 8 drawer configuration).
- Standard Size Upright Cabinet.
- Standard Upright Cabinet Extension.
- 2 x 1-Door Wall Cabinets.
- Peg Board (including 46 piece peg kit).



6 PIECE GARAGE STORAGE SYSTEM

OVERALL DIMENSIONS 2300mm (H) x 2140mm (W) x 550mm (D)

Combo includes:

- 2 x 2-Door Wall Cabinets
- Heavy Duty Workbench - Timber or Stainless Top
- Standard Upright Cabinet
- 2-Door Roll Cabinet
- 4-Drawer Roll Cabinet
- Peg Board with Peg Kit



7 PIECE GARAGE STORAGE SYSTEM

OVERALL DIMENSIONS 2300mm (H) x 2750mm (W) x 630mm (D)

Combo includes:

- 48" Drawer 4 Drawer Top Roll Cabinet (Available in 8 drawer configuration).
- 2 x Standard Size Upright Cabinet.
- 2 x Standard Upright Cabinet Extension.
- 2 x 1-Door Wall Cabinets.
- Peg Board (including 46 piece peg kit).



8 PIECE GARAGE STORAGE SYSTEM

OVERALL DIMENSIONS 2300mm (H) x 3060mm (W) x 550mm (D)

Combo includes:

- Heavy Duty Workbench - Timber or Stainless Top
- Standard Upright Cabinet
- Standard Upright Cabinet Extension
- 2-Door Roll Cabinet
- 4-Drawer Roll Cabinet
- 3 x 1-Door Wall Cabinets
- Peg Board with Peg Kit



9 PIECE GARAGE STORAGE SYSTEM

OVERALL DIMENSIONS 2300mm (H) x 2750mm (W) x 630mm (D)

Combo includes:

- Heavy Duty Workbench - Timber or Stainless Top
- Standard Upright Cabinet
- Standard Upright Cabinet Extension
- 2-Door Roll Cabinet
- 4-Drawer Roll Cabinet
- 3 x 1-Door Wall Cabinets
- Mounting Frame Kit
- Peg Board with Peg Kit



10 PIECE GARAGE STORAGE SYSTEM

OVERALL DIMENSIONS 2300mm (H) x 2750mm (W) x 630mm (D)

73

- Heavy Duty Chrome Steel
- Assembly required
- 227kg Weight Capacity

COMMERCIAL 3-TIER WIRE TROLLEY

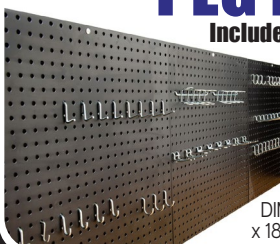
876mm (H) x 863mm (W) x 457mm (D)



74

PEG BOARD

Includes 46 piece Peg Kit



Available in Grey

DIMENSIONS 610mm (H) x 1830mm (W) x 15mm (D)

STAINLESS STEEL STOOL

- 38cm seat diameter.
- 69cm lowest adjusted point.
- 79.5cm highest adjusted point.
- Strong and sturdy, and can withstand over 125kg.



75

FLAT PACKED

All Maxim HD and Seville Classics products come flat packed with clear and detailed instructions. All assembly tools supplied

GARAGE STORAGE

STEEL CONSTRUCTION
POWDER COAT SEMI GLOSS FINISH
SECURE AND KEY LOCKABLE



48" ROLL CABINET 4 Drawers

Also available with a stainless steel top
958mm (H) x 1350mm (W Including Handles) x
550mm (D)

- Ball bearing slides
- 5" x 2" Castors
- 250kg Weight Bearing Capacity



48" ROLL CABINET 8 Drawers

Also available with a stainless steel top
958mm (H) x 1350mm (W Including Handles) x
550mm (D)

- Key Lockable
- 1 x Adjustable Shelf
- Magnetic door retention
- 250kg Weight Bearing Capacity



78
4 DRAWER CABINET



79
2 DOOR CABINET
150kg Weight Bearing Capacity



80
4 DRAWER COMBO
150kg Weight Bearing Capacity



81
6 DRAWER CABINET*



82
4 DRAWER CHEST



83
10 DRAWER COMBO



84
8 DRAWER COMBO

4 DRAWER CHEST DIMENSIONS: 462mm (H) x 635mm (W) x 279mm (D)
ALL CABINET DIMENSIONS: 890mm (H) x 750mm (W) x 585mm (D)
*6 DRAWER CABINET DIMENSIONS: 890mm (H) x 750mm (W) x 535mm (D)

Dimensions include
bumpers, handles & castors



72" ROLL CABINET with timber or stainless top

Also available with a stainless steel top
953mm (H) x 1870mm (W) x 550mm (D)
250kg Weight Bearing Capacity



47" WORKBENCH with Stainless Steel top

- 38mm Brushed Stainless Steel
- 2 x Large Reinforced Drawers
- 75mm x 75mm legs
- Heavy duty reinforced frame
- Drawers are supported by ball bearing slides

Powder Coated in Semi Gloss Black

DIMENSIONS 920mm (H) x 1195mm (W) x 660mm (D)
100kg Top Bench Load Bearing Capacity



48" WORKBENCH

Your choice of timber top
or stainless steel top

DIMENSIONS
1560mm (H) x 1220mm (W) x 610mm (D)
250kg Weight Bearing Capacity
Available with wheels or feet

**INCLUDES 23 PIECE
PEG BOARD & KIT**



FLAT PACKED

All Maxim HD and Seville Classics products come flat packed with clear and detailed instructions. All assembly tools supplied

GARAGE STORAGE

STEEL CONSTRUCTION
POWDER COAT SEMI GLOSS FINISH
SECURE AND KEY LOCKABLE



4-LEG 72" WORKBENCH

your choice of timber top
or stainless steel top

975mm (H) x 1830mm (W) x 630mm (D)
Load rated at 450kg

INCLUDES
23 PIECE
PEG BOARD & KIT



48" WORKBENCH

Your choice of timber top
or stainless steel top

1560mm (H) x 1220mm (W) x 610mm (D)
250kg Weight Bearing Capacity
Available with wheels or feet



725mm-1065mm HEIGHT ADJUSTABLE 72" WORKBENCH

your choice of timber top
or stainless steel top

725-1065mm (H) x 1830mm (W) x 630mm (D)
Load rated at 450kg



725mm-1065mm HEIGHT ADJUSTABLE 48" WORKBENCH

your choice of timber top
or stainless steel top

725-1065mm (H) x 1220mm (W) x 630mm (D)
Load rated at 250kg

MEGA 48" EXTENSION CABINET

475mm (H) x 1220mm (W) x 610mm (D)



60kg weight
capacity per shelf
(evenly spread).

MEGA 48" UPRIGHT CABINET

1840mm (H) x 1220mm (W) x 610mm (D)



60kg weight capacity
per shelf (evenly spread).

SUPER SIZE 48" UPRIGHT CABINET

1830mm (H) x 1220mm (W) x 460mm (D)

- 4 x Reinforced Shelves with triple rolled edges.
- 3 x shelves are height adjustable.
- 6 x Stainless soft closing hinges.



4 DOOR COMBO CABINET

60kg weight capacity
per shelf (evenly spread).

- Includes an Upright Cabinet & Top Cabinet Extension
- Reinforced ribs to all shelves and doors.
- Magnetic door retention.
- Adjustable leveling pads & Key lockable.

95 STANDARD SIZE
2300mm (H) x 920mm (W) x 460mm (D)

96 SUPER SIZE
2300mm (H) x 1220mm (W) x 460mm (D)

97 MEGA 48
2315mm (H) x 1220mm (W) x 610mm (D)

*Top cabinet & combo not available for the Mega 60"

GARAGE STORAGE

STEEL CONSTRUCTION
POWDER COAT SEMI GLOSS FINISH
SECURE AND KEY LOCKABLE



SMALL, MEDIUM & LARGE BINS

Small: 130mm (H) x 135mm (W) x 360mm (D)
Medium: 165mm (H) x 275mm (W) x 360mm (D)
Large: 165mm (H) x 410mm (W) x 360mm (D)



DIMENSIONS
1570mm (1635mm on castors) (H) x 910mm (W) x 355mm (D)



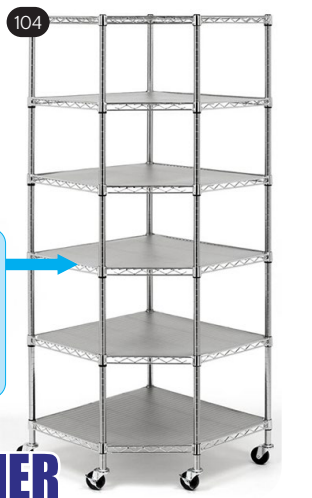
8 SHELF BIN RACK with 24 Bins



8 SHELF BIN RACK with 42 Bins



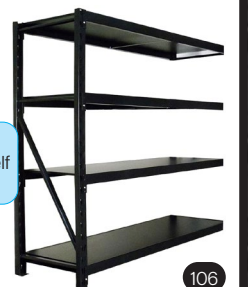
1820mm (1930mm on castors) (H) x 1220mm (W) x 460mm (D)



1820mm (1930mm on castors) (H) x 710mm (W) x 710mm (D)



1830mm (H) x 1950mm (W) x 610mm (D)



FLAT PACKED

All Maxim HD and Seville Classics products come flat packed with clear and detailed instructions. All assembly tools supplied

SEVILLE CLASSICS

We've partnered with Seville Classics to bring their Ultra HD Garage Storage range to Australia. Seville Classics is the leading innovator in home organisation and garage storage.



With Mounting Kit, there's no need to find studs. No measuring. No drilling. Simply attach the Mounting Kit to the Workbench.

10 PIECE GARAGE STORAGE

- 4-Drawer Roll Cabinet
- Standard Upright Cabinet w/wheels
- 8-Door Roll Cabinet
- Peg Board with Peg Kit
- Timber Top Workbench
- Standard Upright Extension
- 3 x 1-Door Wall Cabinets
- Frame Mounting Kit

- 107** 9 PIECE GARAGE STORAGE WALL MOUNTED (Peg Board & Wall Cabinets)
DIMENSIONS 2300mm(H) x 2750mm(W) x 630mm(D)
- 108** 10 PIECE GARAGE STORAGE WITH MOUNTING KIT (Attaches to the workbench)
DIMENSIONS 2300mm(H) x 2750mm(W) x 630mm(D)
- 109** 11 PIECE GARAGE STORAGE (2 x Standard Upright Cabinets & Extensions Wall Mounted)
DIMENSIONS 2300mm(H) x 3670mm(W) x 630mm(D)
- 110** 12 PIECE GARAGE STORAGE (2 x Standard Upright Cabinets & Extensions with Mounting Kit)
DIMENSIONS 2300mm(H) x 3670mm(W) x 630mm(D)

- This combination includes:
- Standard Upright Cabinet
 - Timber Top Workbench
 - 4-Drawer Roll Cabinet
 - 2-Door Roll Cabinet



4 PIECE GARAGE STORAGE

1830mm (H) x 2750mm (W) x 630mm (D)

- This combination includes:
- The 4 Piece Garage Storage above
 - Peg Board with Peg Kit



5 PIECE GARAGE STORAGE

1830mm (H) x 2750mm (W) x 630mm (D)



Peg Boards on the side
1 x Height Adjustable Shelf

72" ROLL CABINET

953mm (H) x 1870mm (W) x 550mm (D)



Load rated at 450kg
German Beech Timber Top

72" WORKBENCH

975mm (H) x 1830mm (W) x 630mm (D)

ALL CABINETS FEATURE

- Reinforced Shelves
- Stainless Steel Doors
- Magnetic Door Retention
- Full Door Height Rod Locking Mechanism

STANDARD UPRIGHT CABINET

Now with wheels!

- 119** WITH WHEELS
1830mm (H) x 920mm (W) x 460mm (D)

- 120** WITH FEET
1740mm (H) x 920mm (W) x 460mm (D)



4 DRAWER CABINET



4 DRAWER COMBO



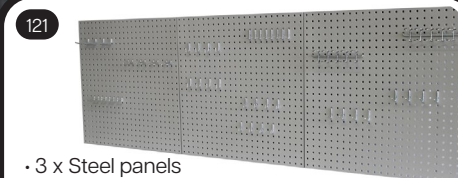
6 DRAWER CABINET*



2 DOOR CABINET

ALL CABINET DIMENSIONS: 890mm (H) x 750mm (W) x 585mm (D)
*6 DRAWER CABINET DIMENSIONS: 890mm (H) x 750mm (W) x 535mm (D)

Dimensions includes bumpers, handles and castors



- 3 x Steel panels
- Peg holes are 1" apart (industry standard)
- Includes screws and gyprock plugs
- Additional peg kits are available

PEG BOARD

INCLUDES 46 PIECE PEG KIT
610mm (H) x 1830mm (W) x 15mm (D)

FLAT PACKED

All Maxim HD and Seville Classics products come flat packed with clear and detailed instructions. All assembly tools supplied

TOOL ORGANISATION

MADE IN THE USA
LIFETIME
GUARANTEE

STEALTH
SPECIALTY TOOLS

122

ST 5015
Holds
12 Spanners

STANDARD SPANNER RACK GRIPPER



123

ST 5115
Holds
12 Spanners

REVERSE SPANNER RACK GRIPPER



124

ST 5015 & 5115
Holds
24 Spanners

SET OF 2 STANDARD and REVERSE SPANNER RACK GRIPPERS



125

ST 5089
Holds
15 Spanners

STANDARD SPANNER RACK GRIPPER



126

ST 5189
Holds
15 Spanners

REVERSE SPANNER RACK GRIPPER



127

ST 5089 & 5189
Holds
30 Spanners

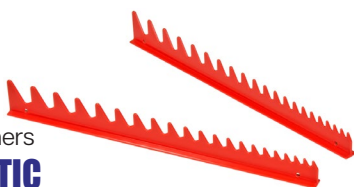
SET OF 2 STANDARD and REVERSE SPANNER RACK GRIPPERS



128

ST 6012M
Holds
20 Spanners

MAGNETIC SPANNER RACK



129

ST 6014M
Holds
40 Spanners

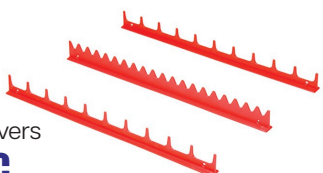
MAGNETIC SPANNER RACK



130

ST 6010M
Holds
20 Screwdrivers

MAGNETIC SCREWDRIVER RACK



131

**SET OF 3 V-SLOT
SCREWDRIVER ORGANISER** ST 5353
SET OF 3 RACKS (holds 24 tools)
hangs off standard 1" x 1" peg boards



132

ST 6050
Holds
30 Spanners

LOW PROFILE SPANNER RACK



133

ST 6040
Holds
14 Screwdrivers

LOW PROFILE SCREWDRIVER RACK



LOW PROFILE COMBO PACK 134

Holds 44 Tools (ST 6040 & ST 6050)

MAGNETIC COMBO PACK 135

Holds 60 Tools (ST 6010M & ST 6014M)

136

ST 5230
• Holds 30 Spanners
• Secure Locking Grip
• Comfortable Handle
• Graduated Tooth Design
• Made in the USA

TOOL TOWER

DIMENSIONS 342mm (H) x
184mm (W) x 139mm (D)



137

ST 5022
• Sturdy
• Stackable
• Made in USA

3 COMPARTMENT TOOL TRAY

Available in Blue, Black & Red



138

ST 5011
10 COMPARTMENT TOOL TRAY
Available in Black, Red & Blue



139

ST 5022
• Sturdy
• Stackable
• Made in USA

SET OF 3 3 COMPARTMENT TOOL TRAYS

Available in Blue, Black & Red

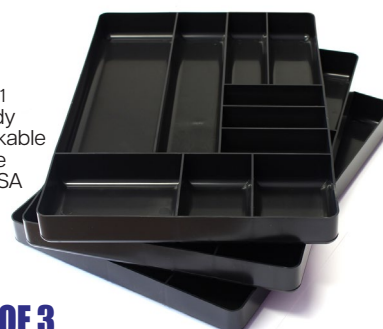


140

ST 5011
• Sturdy
• Stackable
• Made in USA

SET OF 3 10 COMPARTMENT TOOL TRAYS

Available in Black, Red & Blue



141



10 TOOL PLIER ORGANISER RACK

Tools not included
ST 5500

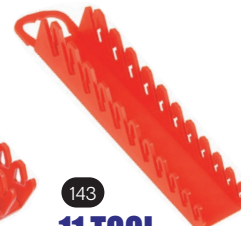
142

**10 TOOL
SCREWDRIVER
GRIPPER**
ST 5310



143

**11 TOOL
STUBBY
SPANNER RACK**
ST 5076



TOOL ORGANISATION

MADE IN THE USA
LIFETIME
GUARANTEE

STEALTH
SPECIALTY TOOLS



3 x 18" RAILS on TRAY and LOW PROFILE COMBO PACK

Holds 89 Tools (includes ST 8450, 6050 & 6040)



18" COMPLETE SOCKET SYSTEM and LOW PROFILE COMBO PACK

Holds 110 Tools (includes ST 8470, 6050 & 6040)



18" COMPLETE SOCKET SYSTEM and MAGNETIC COMBO PACK

Holds 126 Tools (includes ST 8470, 6014M & 6010M)

147 13" RAILS SET OF 2 ON TRAY

RED & BLUE:

1/4" ST 8492 - 30 Clips
3/8" ST 8493 - 28 Clips
1/2" ST 8494 - 22 Clips



148 13" RAILS SET OF 3 ON TRAY

RED & BLUE:

1/4" ST 8465 - 45 Clips
3/8" ST 8464 - 42 Clips
1/2" ST 8463 - 33 Clips



149 18" RAILS SET OF 2 ON TRAY

RED & BLUE:

1/4" ST 8452 - 30 Clips
3/8" ST 8453 - 30 Clips
1/2" ST 8454 - 30 Clips



150 18" RAILS SET OF 3 ON TRAY

RED & BLUE:

1/4" ST 8462 - 45 Clips
3/8" ST 8461 - 45 Clips
1/2" ST 8460 - 45 Clips



151 18" COMPLETE SOCKET SYSTEM with MAGNETIC BASE

Mix Set: 1/4", 3/8" & 1/2" ST 8470



152 18" RAIL with TWIST LOCK SOCKET CLIPS

RED & BLUE:

1/4" ST 8400 - 15 Clips
3/8" ST 8401 - 15 Clips
1/2" ST 8402 - 15 Clips



153 18" RAIL SET OF 2 ON TRAY 3/4" - 14 CLIPS

RED & BLUE:

ST 8458 - 15 Clips
ST 8459 - 15 Clips



Arranging and identifying your sockets have now become easier. You can now arrange your sockets by using **RED** for metric and **BLUE** for imperial.

154 TWIST LOCK SOCKET CLIPS

1/4" (Pack of 15) ST 8440
3/8" (Pack of 15) ST 8441
1/2" (Pack of 15) ST 8442
3/4" (Pack of 5) ST 8443



155 IMPACT SOCKET CLIPS

3/8" (Pack of 15) ST 8343
1/2" (Pack of 15) ST 8344



156 FACE MOUNT RATCHET & EXTENSION HOLDERS

1/4" (Pack of 2) ST 8354
3/8" (Pack of 2) ST 8355
1/2" (Pack of 2) ST 8356



157 SIDE MOUNT RATCHET & EXTENSION HOLDERS

1/4" (Pack of 2) ST 8351
3/8" (Pack of 2) ST 8352
1/2" (Pack of 2) ST 8353



158 BIT BOSS

Can hold up to 90 bits



159 8" BIT BAR

Holds 30 Bits Compact
Tool Organiser



160 18" BIT BAR

Holds 78 Bits Compact
Tool Organiser



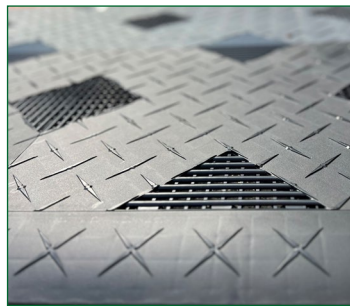
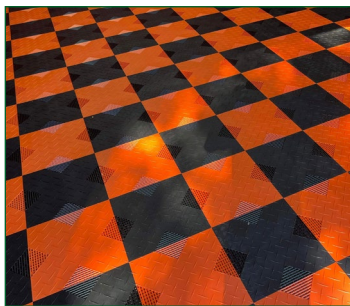
HYBRID-X FLOOR TILES



EAGLE PRO FLOORING

Eagle Pro Flooring is our custom brand of floor tiles which are perfect for use in the garage, shed, gym, laundry, workshop and anywhere you need high quality floor tiles and durable floor coverings. These tiles are easily installed using four interlocking loops on each side; ensuring a secure connection between each tile. All tiles are made from a high-impact co-polymer polypropylene which is a 100% raw material (not recycled plastic).

The diamond reinforced structure will support the weight of cars, 4 wheel drives, motorbikes and trailers. Channels are also underneath each tile making sure liquids have a way to drain down and away from the tiles if they get wet. The configurations are customisable by you so whether it's a checkered pattern, two coloured, bordered - the limitations on how the colours appear on the floor is up to you. We're the only importers of the Eagle Pro brand, which is made in the USA.



- Tiles are 16.5mm (H) x 432mm (W) x 432mm (L); approx. 680 grams per tile. Approximately 1 square metre = 5-6 tiles. [US imperial system: 0.65" (H) x 17" (W) x 17" (L); 1.5 pounds per tile.]
- Resists most natural household and automotive fluids (oil, petrol).
- Each tile has been 100% UV stabilised.
- Each tile can be easily swapped out if one gets damaged, without needing to pull up the whole floor.
- Comes in a range of colours – Black, Dark Grey (graphite), Light grey (silver), Red, Blue, Orange and White.
- Tiles can be cut to shape using a jigsaw or table saw, to fit any tough shape.



161

HYBRID-X Tile Ramp

Available with and without loops
16.5mm (H) x 76mm (W) x 432mm (L)

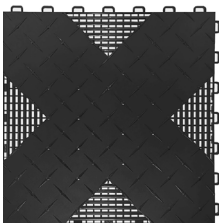


162

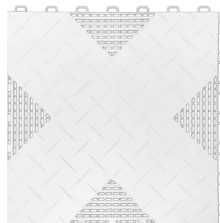
HYBRID-X Tile Corner

16.5mm (H) x 432mm (W) x 432mm (L)

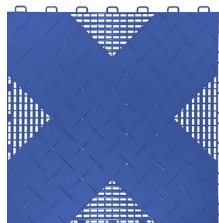
163



BLACK



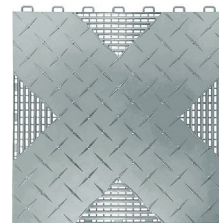
WHITE



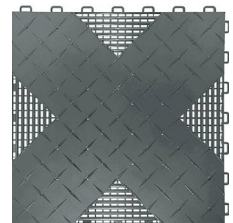
BLUE



ORANGE



SILVER



GRAPHITE

For Enquiries

Phone: (02) 4721 7970

Email: sales@justprotools.com.au

SYDNEY WAREHOUSE

Unit 2 1/13 Childs Road, Chipping Norton, NSW, 2170

